



右頁：游泳池完全採黑色石材，如此方能完整反映城市倒影

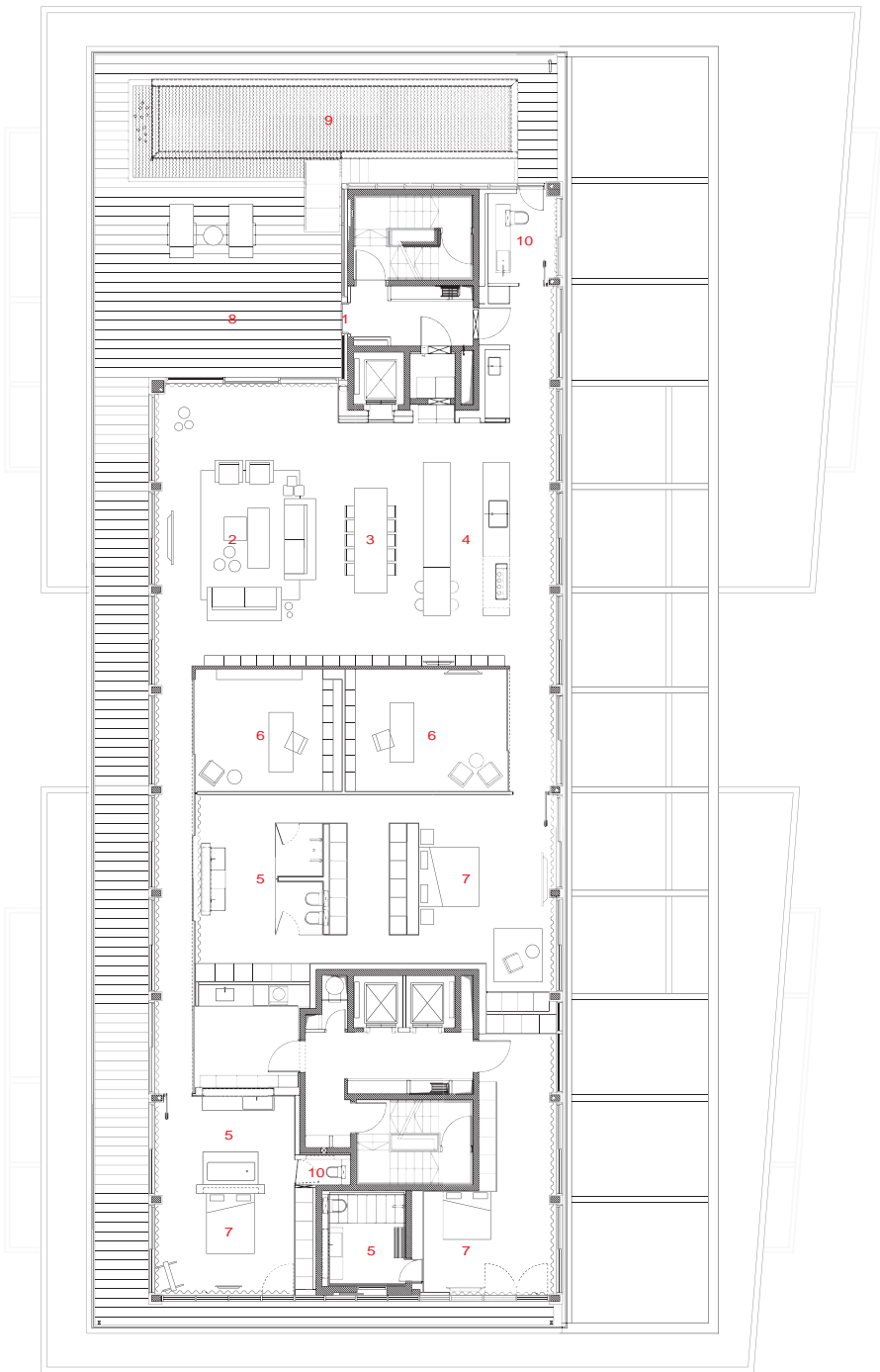
以色列特拉維夫市 城市中開放透明的公寓

Open And Transparent To The City, Tel Aviv, Israel

匹少·可鄧建築師事務所
Pisou Kedem Architects

設計：匹少·可鄧建築師事務所
主要建築師：冉·M. 巴狄
設計團隊：匹少·可鄧 冉·M. 巴狄
奈斯·班·優泰福 艾琳·戈德堡
空間性質：公寓
空間面積：600平方公尺
座落位置：以色列特拉維夫市
影像：阿米特·傑龍
風格攝影：埃絲·貝斯奇拉
採訪：劉湘怡
文字：匹少·可鄧建築師事務所
整理：賴姿穎

Design：Pisou Kedem Architects
Head Architect：Ran M. Brodes
Design Team：Pisou Kedem · Ran M. Brodes ·
Nurit Ben Yosef · Irene Goldberg
Character of Space：Apartment
Total Floor Area：600 m²
Location：Tel Aviv, Israel
Photography：Amit Geiron
Styling for Photographs：Eti Buskila
Interview：Rowena Liu
Text：Pisou Kedem Architects
Collator：Lisa Lai



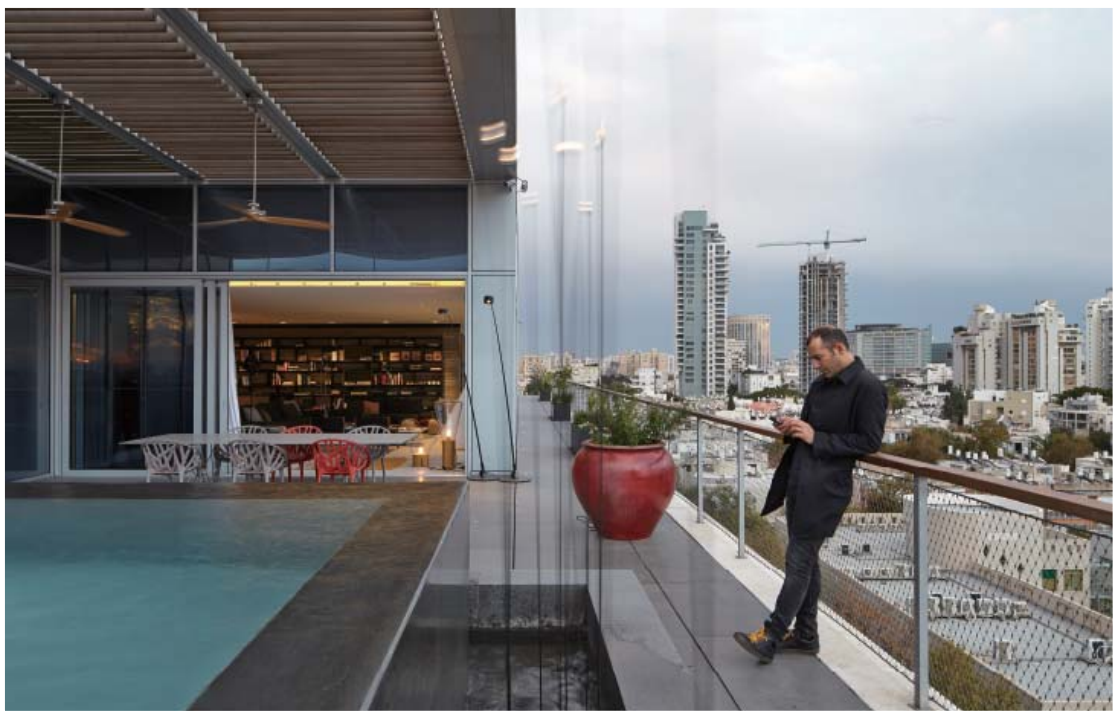
平面圖 PLAN

1. 入口玄關 2. 客廳 3. 餐廳 4. 廚房 5. 衛浴 6. 書房 7. 臥房 8. 陽台 9. 游泳池 10. 衛生間
1. vestibule 2. living room 3. dining room 4. kitchen 5. bathroom
6. study 7 bedroom 8. balcony 9. swimming pool 10. rest room



右頁：公寓建蓋時採用的建材大部份原樣呈現

左頁：建築物外殼裡漂浮的內部空間與整座城市完全融合



匹少·可鄺 (Pisou Kedem) 的這個新潮設計消彌了私人空間和戶外空間的界線；在特拉維夫 (Tel Aviv) 北部的舊社區內這棟新建築隱藏了一座獨特的閣樓，整個樓層約莫600平方公尺，四面開放、透明。整個閣樓被清一色的透明牆面包圍，建築物外殼裡漂浮的內部空間和整座城市完全融合，通道和動線或是傳統設計的走廊通往各個房間和公寓內所有空間，緊鄰結構外殼，沒有任何房間連接外殼也沒有任何房間阻斷或遮蔽俯瞰城市的景觀。利用各種不同的遮光方式調節透明度和曝光度，讓人從公寓的一端望向另一端時，視線可綿延不斷。公寓的前側大約以公尺長，有透明的柚木框滑動門，方便各內部空間朝外設開啟或關閉，如衛浴和臥房，讓城市景光進入屋內，氣溫獲得調節，住在裡面的人也能隨時欣賞天際線和變化無窮的燈光。公寓建蓋時採用的建材大部份原樣呈現，客廳內的地板採制水磨石，牆面的混凝土裸露，正好和金屬書架取得平衡，游泳池完全採黑色石材，如此方能完整反映城市倒影。陽台上處處可見植栽，包含反映及延續著特拉維夫住家花園特色植物的素馨樹。

This unconventional design by Pisou Kedem blurs the borders between private space and outdoor space. In a new building, in the old north of Tel Aviv, a unique penthouse covering an entire floor of some 600 square meters, is open and transparent in four directions. The entire penthouse is wrapped with a screen of clear walls. The internal spaces, floating within the building's shell, are fully exposed to the city. Passages and movement, or corridors in conventional design language, to the rooms and then, on to the apartment's spaces are next to the structure's outer shell. No rooms connect with this outer shell and no rooms block or shut off the view over the city. The levels of transparency and exposure are regulated using various methods of shading. Thus long and continuous lines of sight are preserved from one of the apartment to the other. Along the entire frontage, some 25 meters, there are transparent, teak framed, sliding doors which allow for the opening and closing of the various internal spaces, such as bedrooms and bathrooms, to the external shell. Thus the city merges into the apartment, the climate is regulated and the residents can enjoy the sky line and changing lights at any given time. The materials used in the apartment's construction are, for the most part, shown in their raw state. The floor is poured terrazzo and an exposed concrete wall in the living room is offset with a metal bookcase. The pool is completely covered with dark stone so that the city can be reflected in its entirety in the water. Along the balcony we find planters with Frangipani trees that reflect and continue the characteristic flora of many Tel Aviv gardens.



scope

右頁：走廊通道動線通往公寓內所有空間
左頁：新潮的設計消彌了私人空間和戶外空間的界線





右頁・左頁：零星散於公寓內各角落的黃色元素為整個設計帶來歡愉活潑



全球精選

House Of The Infants, Cadix, Spain

Villa Escorial, Algarve, Portugal

The House On The Cliff, Granada, Spain

Open And Transparent To The City, Tel Aviv, Israel

Redistribution Of A House, Seville, Spain

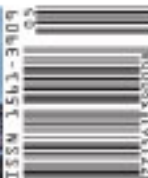
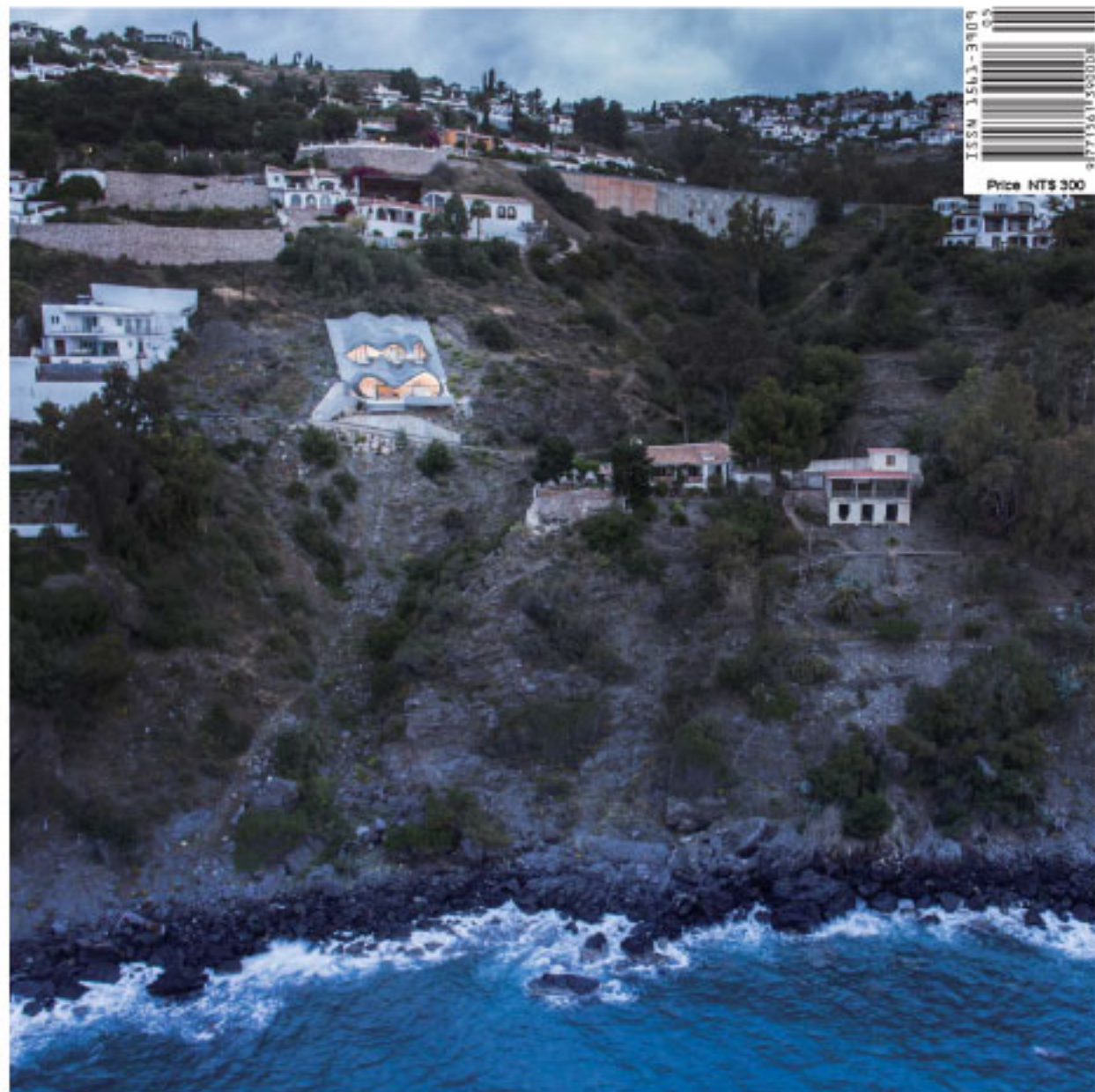
Morris Villa, São Paulo, Brazil

An House, São Paulo, Brazil

W200 Building, São Paulo, Brazil

ILW 傢飾

109



Price NT\$ 300