

HOUSE ON THE SEA

海岸边的白色风景线

设计 / Tamar Berger (总建筑师)、Irene Goldberg、Pitsou Kedem
灯光设计 / Orly Avron Alkabes 摄影 / Amit Geron
修图 / Eti Buskila 编译 / 范嘉苑

项目地址 以色列
项目面积 280m²
设计单位 Pitsou Kedem Architects





Pitsou Kedem
以色列Pitsou Kedem Architects
创始人兼主设计师

本案位于以色列地区的地中海沿岸，能眺望到一望无际的蔚蓝海景，光线与地平线是建筑的设计元素，线条与光影的交汇自然而然地成为了建筑的主调，并与周围的自然环境和谐交融在一起。与此同时，设计团队还将不同的设计语言及丰富的历史元素植入建筑之中，其中不仅体现出了西方及现代的设计原则，同时也能找到罗马统治以色列时期以及当代以色列的建筑特点。

室内空间简约大方，彰显出国际化的设计风范，除了注重功能性与现代感之外，身处住宅中还能感受到非对称的建筑结构之美以及空间布局的开阔流畅。各种家具及配饰都以简洁干净为主调，以衬托出周围的美丽景致。例如，客厅里的大号灰色布艺沙发搭配白色的几何造型茶几以及简洁现代的电视柜墙，强调了简单舒适的生活调性，而从天花板上垂挂而下的条形吊灯在半空中错落有致地排布开来，给简约风格的空间增添了一份轻盈的层次感。开阔高耸的玻璃窗被运用于建筑之中，室外的蔚蓝景色一览无余，与室内空间的氛围相得益彰。落地窗外是户外露台，几张休闲沙发摆放在草地上，充满写意的生活情怀。建筑外立面采用了线条型结构，不仅符合时下的建筑风格，同时也能起到通风散热的效果，适合当地的炎热气候，防止建筑过热。

不同方向的门窗及立面也采用了不同的设计，让建筑结构看起来简约又不失层次感。面向西面的门窗被嵌在了条形框架之中，从远处望去，绵延的白色线条让建筑多了几分灵动之美。南面的窗户则与之形成对比，大面的玻璃门窗成为了立面的一部分，起到了揽景入室的效果，简洁的金属框架则有保护玻璃的作用。

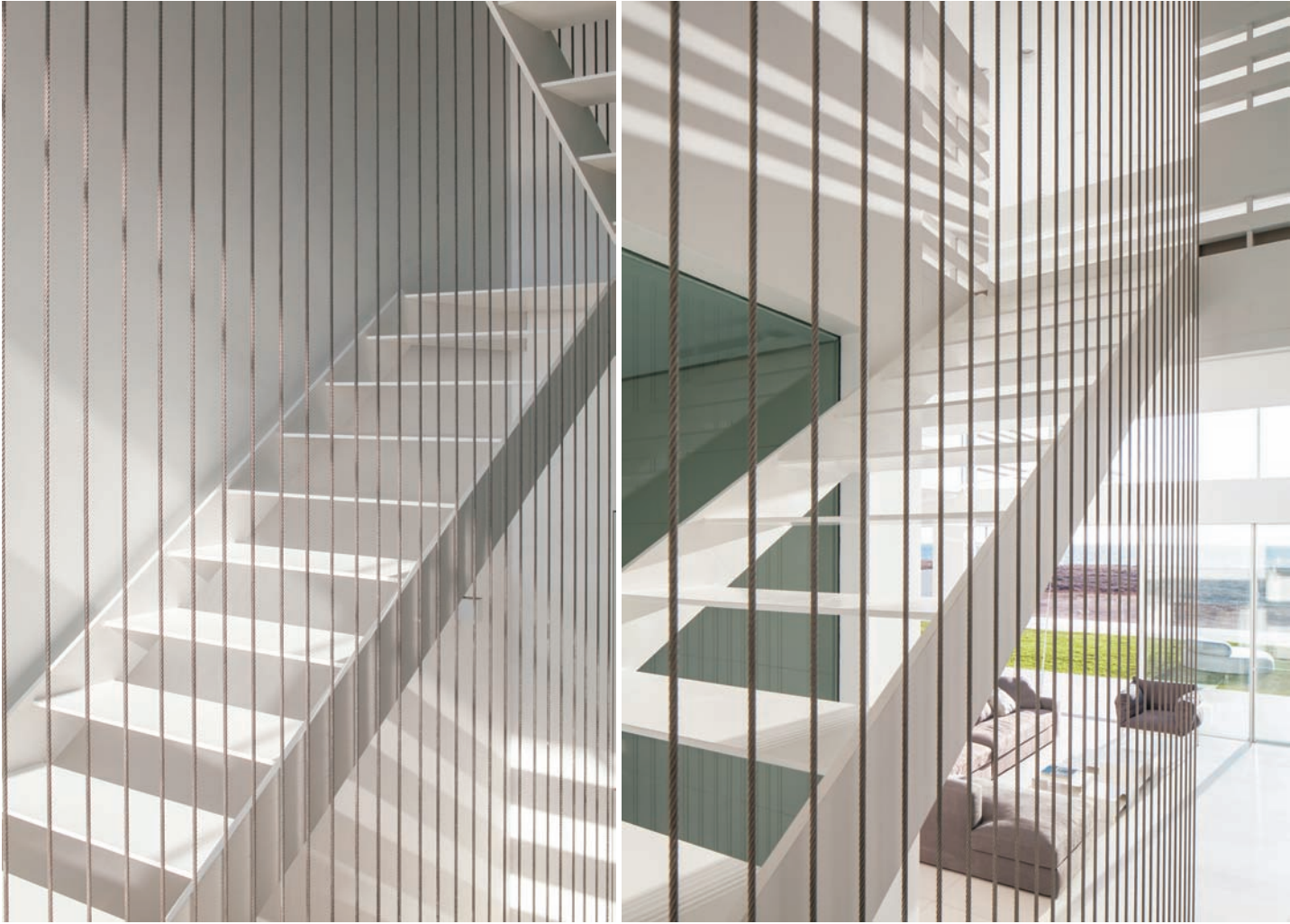
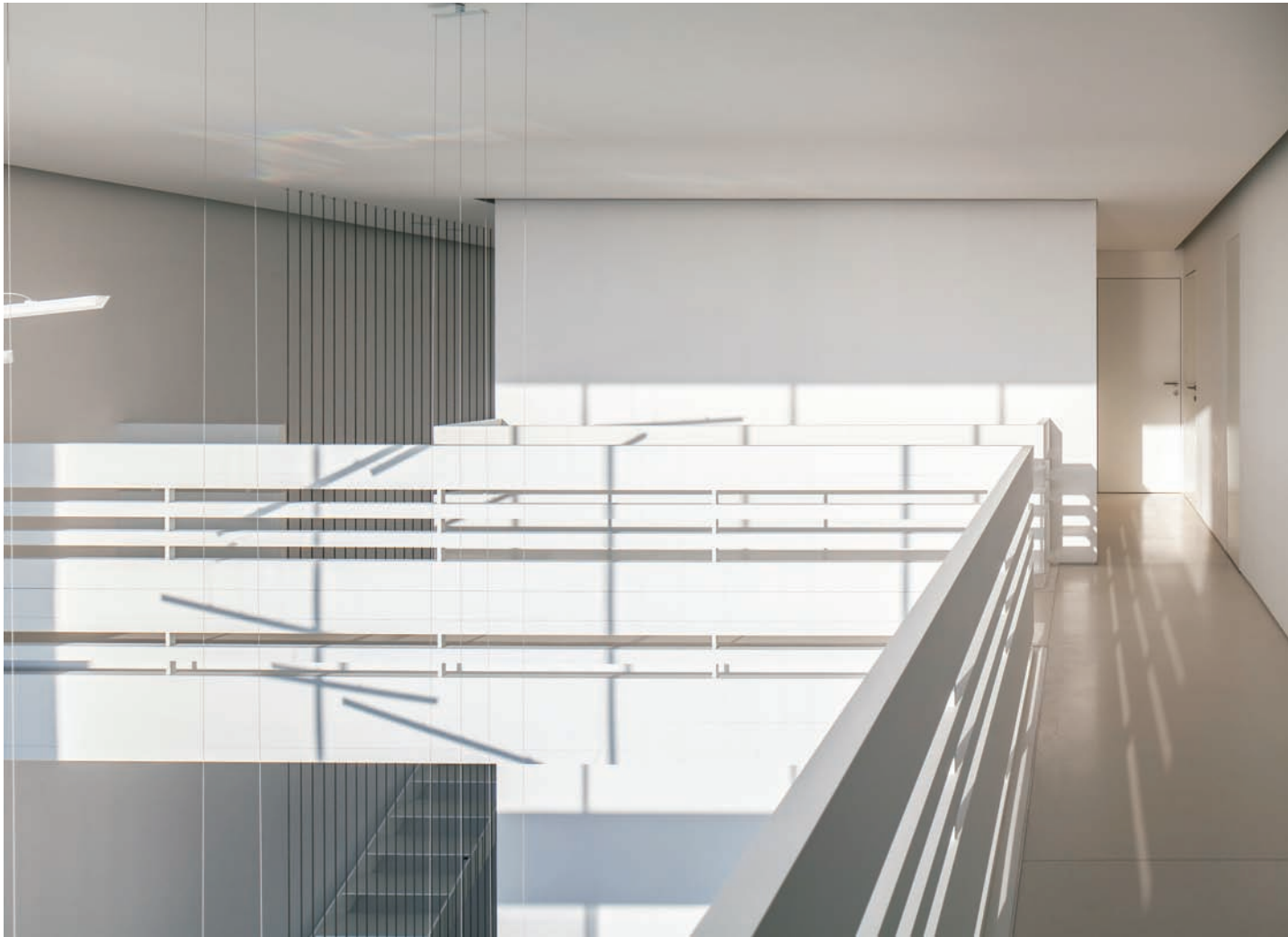
广阔的地平线逐渐与蔚蓝的海岸线融为一体，从日出到日落的景象，还有自然环境随着时间变化所呈现出的不同样貌都被一一揽入视线之中，住户从屋子里透过窗户就能欣赏和捕捉到一个个美丽的瞬间。住在这样的一座海景屋里，生活也变得舒适和自在。



Light and horizon play together within the design of this home located on the mediterranean shore. The vernacular of its design is embedded with western, modern principles, but also those of the Romans, that of the mandate period, and that of Israel today.

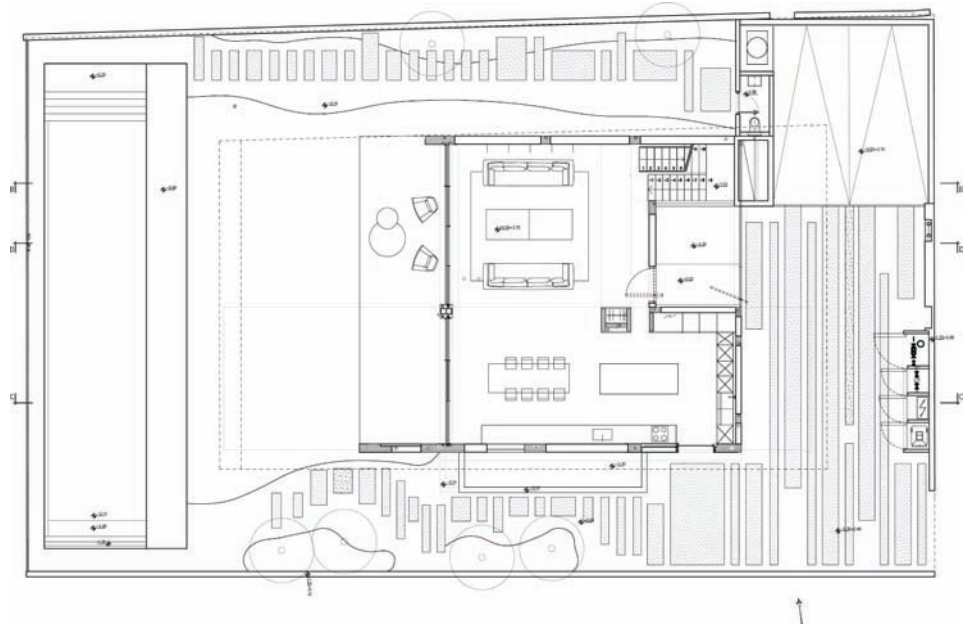
Echoing within this home is the style of international architecture. Alongside the functional, modern character of its design one feels the builtin masses, the asymmetry, and the dismantling of space all of which project upon its urban environs. The outer, linear envelope of the building evokes both the international style of the moment while subverting it to its own purpose protecting the building from overheating under a desert sun.

The westernfacing windows and doors are shaded by a permanent frame allowing for the uninterrupted pleasure of those who peer through them. In contrast to these frames, the southern windows are framed by



thin, broad, metal lintel, creating an extra dimension from which to view the sea while simultaneously protecting the glass.

Then just as today the horizon which disappears into the expansive blue before us provides a sense of natural transformation. The details of the facade's windows capture this very transformation through their observation of the surroundings. A life of comfort, organically promoted by the form of the building, resonates within the physical expression of its design. ■



一层平面图

