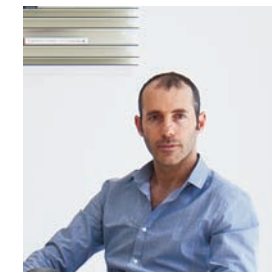


SB HOUSE

森语

设计 / Pitsou Kadem, Tamar Berger, Irene Goldberg, Hagar Arad Tsvi
摄影 / Amit Geron 修图 / Eti Buskila 编译 / 范嘉苑 美编 / 张萍萍

项目地址 以色列 特拉维夫
项目面积 511m²
设计单位 Pitsou Kadem Architects



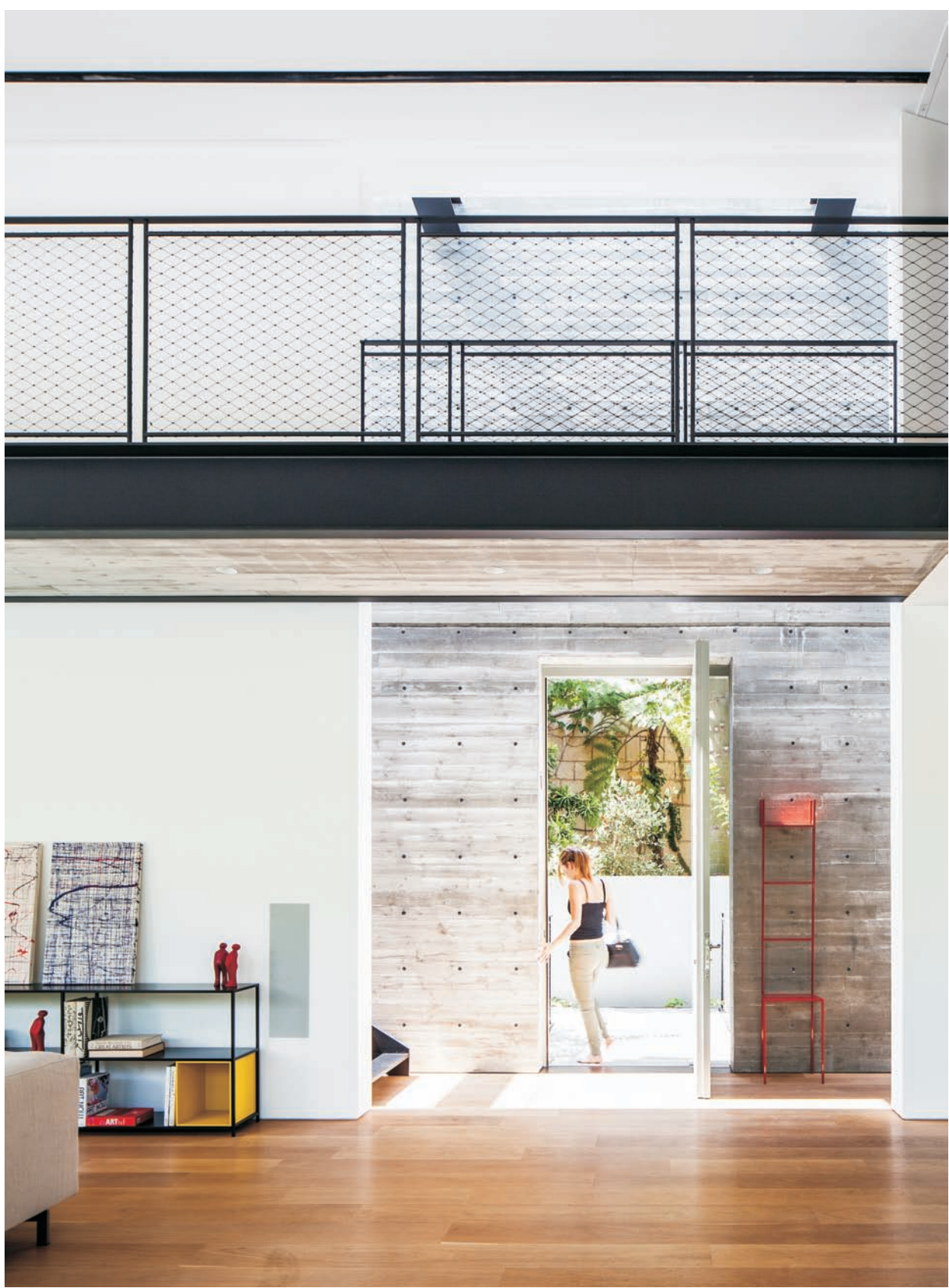
Pitsou Kadem
以色列Pitsou Kadem Architects创始人兼主设计师

工业革命促进的技术进步，使铁及混凝土在建筑方面的运用得到普及，并带来了现代主义的福音。位于以色列特拉维夫的这座住房也是以铁及混凝土作为主要建材，其内部及外部的关系把控精准，气候条件及隐私需求也被充分考虑在内。

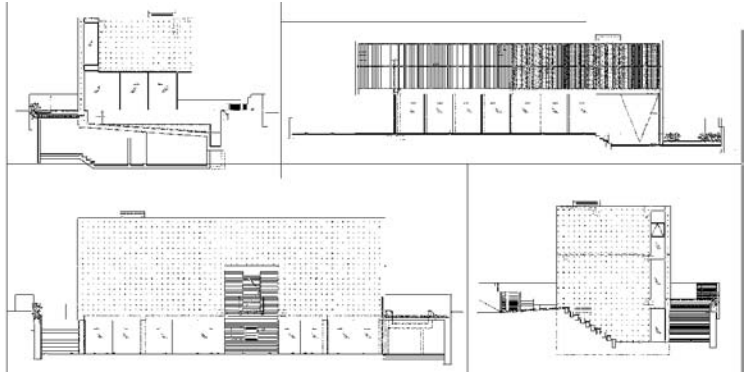
建筑的入口门厅是连接各个空间的交汇处，通过门厅处的两条走道能进入不同的区域，比如从入口处能通往夹在两面高墙之间的狭长通道，透过玻璃天窗及立面能瞥见天空和室外景色，同时也强调了室内外空间的过渡。旁边的客厅则采用开放式的布局，与户外花园无缝连接，并将自然景色揽入室内。

起居空间及厨房区域涵盖了一系列的公共空间，其中包括厨房、客厅、花园以及延展至室外的游泳池，流畅开阔的空间布局让人感到惊喜，并能获得豁然开朗的居住体验。客厅里的家具及饰品都以简约素雅为主，进一步衬托出室外的绿景。地面上铺设的是天然木材地板，与工业风格的混凝土天花板形成反差效果，同时又不失粗犷、和谐的调性。

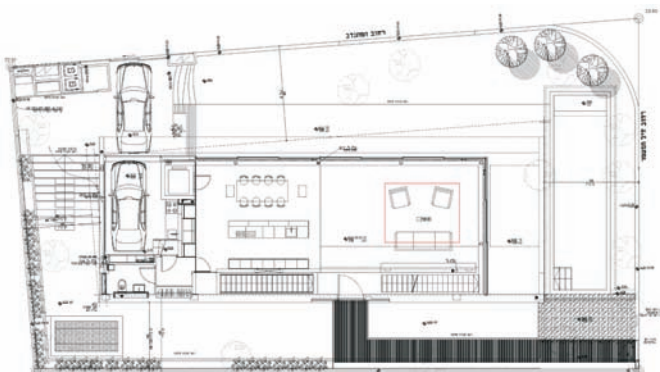
儿童房位于较低层，面向下沉的庭院，透过玻璃窗户来采光，邻近大宅入口。主卧则位于向北的较高楼层，通过调节木质百叶窗能调控室内的进光量。主卧也以简约风格为主，低矮的床铺休闲舒适，一大幅画风简洁的画作倚靠在墙面上，为卧室增添了不少艺术气息。







剖面图



一层平面图





Technological advances of the industrial revolution, which allowed the use of iron and concrete building blocks of the building brought with them the Gospel of modernism. SB HOUSE's building envelope architecture serves as the generator, trolling the exact dosage between interior and exterior relations, climate and considerations of privacy.

From the entrance hall is the confluence of linked the transactions in space himself and his passages from two sides of the hall to the other spaces, like the movements themselves confined between two walls that produce open glance toward the sky framed and thus emphasize the transition between interior and exterior, which increases with the session and the initial living room is revealed towards the open garden, closed, open.

The living space and kitchen area are producing a series of public spaces including the kitchen, living room, garden and pool and surprise in the sense of openness that no tapering at the experience. Covering the floor made in natural wood panels – these look like landed down after casting the concrete roof's bare and left him nakedness—rows of molding.

Children's rooms are located on the lower level lit throughout by the sunken courtyard and watched the entrance while the master bedroom is on the upper level is open all the way towards the north at wood blinds vertical lender allow controlling the light and exposure. 