



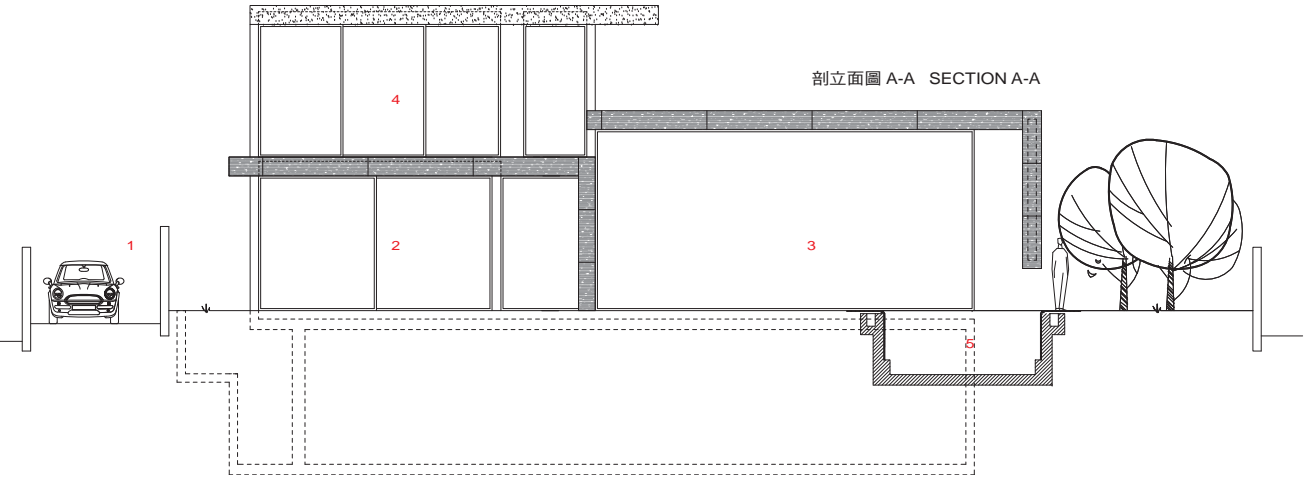
右頁：這棟住宅是一個狹長獨立空間，中間會合處形成室內外的過渡空間



以色列卡法許瑪洛 AB住宅
匹少·可鄧建築師事務所
Pisou Kedem Architects

主要建築師：拉茲·梅拉梅德
設計團隊：艾琳·戈德堡 匹少·可鄧
照明設計：奧利·艾弗羅 阿爾卡貝司
空間性質：獨立住宅
空間面積：770平方公尺
基地面積：1,800平方公尺
座落位置：以色列卡法許瑪洛
影像：阿米特·傑龍
風格攝影：埃綿·貝斯奇拉
採訪：劉相怡
文字：匹少·可鄧建築師事務所
整理：吳佳陵

Principal Architect：Raz Melamed
Design Team：Irene Goldberg · Pisou Kedem
Lighting Design：Ory Avron Alkabes
Character of Space：Single Family House
Total Floor Area：770 m²
Site Area：1,800 m²
Location：Kfar Shmariau, Israel
Photos：Ami Geron
Styling for Photography：Eli Buskila
Interview：Rowena Liu
Text：Pisou Kedem Architects
Collator：Chia Ling Wu



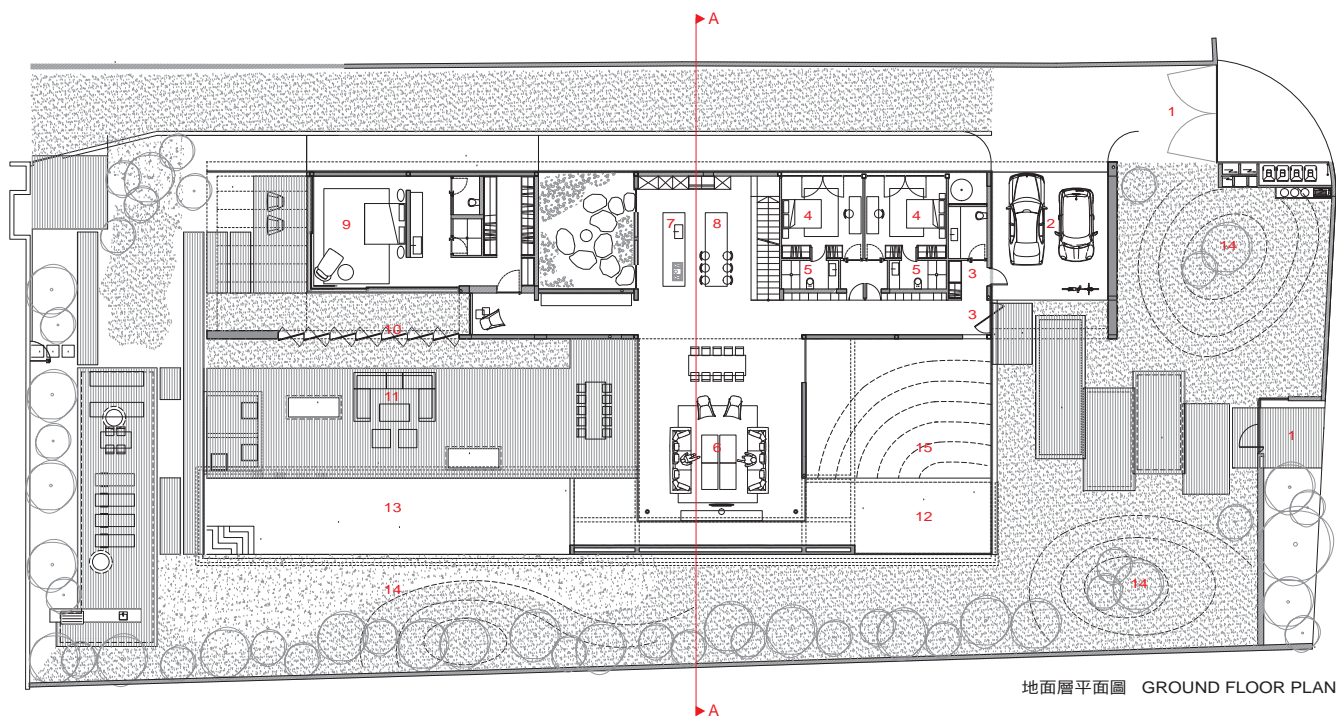
1. 車庫 · 入口玄關 2. 廚房 · 餐廳 3. 客廳 4. 臥室 5. 倒影池
1. garage · vestibule 2. kitchen · dining room 3. living room 4. bedroom 5. reflection pool

這棟住宅由兩個位於中央的方箱組成——一個是由混凝土牆建構而成的長方形，漂浮在凹陷的庭院和倒影池上方；另一個則外塗白色石膏。兩個中央結構體都被漆上白漆的金屬網包圍著，若是願意，可將它解讀為現代風格版的中東危機。金屬網由不斷重複的幾何圖形構成，讓光線與空氣得以進入封閉的空間以及由它連結起來的室內和室外區域。金屬網沿著房屋蜿蜒穿行，彷彿要為整棟建築勾勒出連續的輪廓。它時而輕薄，讓光線和空氣都得以穿透進來；時而封閉，有時可作為入口，有時則因為嵌入一排旋轉門系統，使得房屋立面不斷變化，顯得極具動態。相同的幾何圖案在房屋不同的室內設計中重複出現，一面沿著懸空樓梯而立，同時也可作為穿孔扶手的金屬牆便是最好的範例。在建築物的南側，混凝土結構體被一面二公尺長的懸掛牆截斷，這面牆因為採用了複雜的工程技術和設計方式，沒有與地面接觸，看起來宛如漂浮在倒影池之上。漂浮在倒影池上方的牆壁凸顯了本案中重要的水元素，從倒影池開始，到游泳池結束，延伸出長長的一條水線。白天，金屬網使得自然光得以進入建築內，在混凝土牆面上投射出圖像般的陰影；夜裡，從屋內各個空間和花園映照出來的光線穿過金屬網，讓整塊基地儼然成為一座「光的雕像」。

The house consists of two, central boxes — one, a long rectangle constructed from exposed concrete, floats above the excavated yard and a reflection pool. The other is coated in white plaster. Both of the two, central masses are covered by a metal net, painted white. It is, if you will, a modern-day interpretation of the Middle East crises. The metal netting is constructed in a recurring, geometric pattern that allows light and air to enter the enclosed spaces as well as the interior and exterior areas that it combines. The netting meanders across the house almost as if it were marking out a series of contours. At times, it is ethereal allowing light and air to access the spaces. Sometimes it is closed, acting as an entrance whilst at other times it is inlaid with a system of pivoting doors that allow one of the facades to appear dynamic and ever changing. The same geometric pattern is repeated in different the building's interior design. For example, a metal wall that follows the floating stairs acting as a perforated balustrade. On the building's southern side the concrete mass is truncated by an 11 meter long, hanging wall which, through the use of complex engineering techniques and solutions, does not touch the ground. The wall seemingly floats above the reflecting pool. Floating above the reflecting pool, the wall emphasises the lengthy water element of the project that starts with the reflecting pool and ends with a swimming pool. During the day, the metal netting allows natural light to enter the building, creating shadow pictures on the concrete surfaces. At night, the light expanding out from the house's spaces and the garden, seeps out through the netting creating a "statue of light" on the plot.



右頁，左頁：相同的幾何圖案在室內設計中重複出現，一面沿著懸空樓梯而立，同時也可作為穿孔扶手的金屬牆



1. 大門入口 2. 車庫 3. 入口玄關 4. 臥室 5. 衛浴 6. 客廳 7. 廚房 8. 餐廳
9. 主臥室 10. 旋轉門 11. 露台 12. 倒影池 13. 游泳池 14. 花園 15. 庭院
- 1.entrance 2. garage 3. vestibule 4. bedroom 5. bathroom 6. living room 7. kitchen 8. dining room
9. master bedroom 10. pivoting doors 11. terrace 12. reflection pool 13. swimming pool 14. garden 15. yard





右頁・左頁：金屬網由重複的幾何圖形構成，讓光線與空氣得以進入封閉的空間以及連結起裡外區域

