



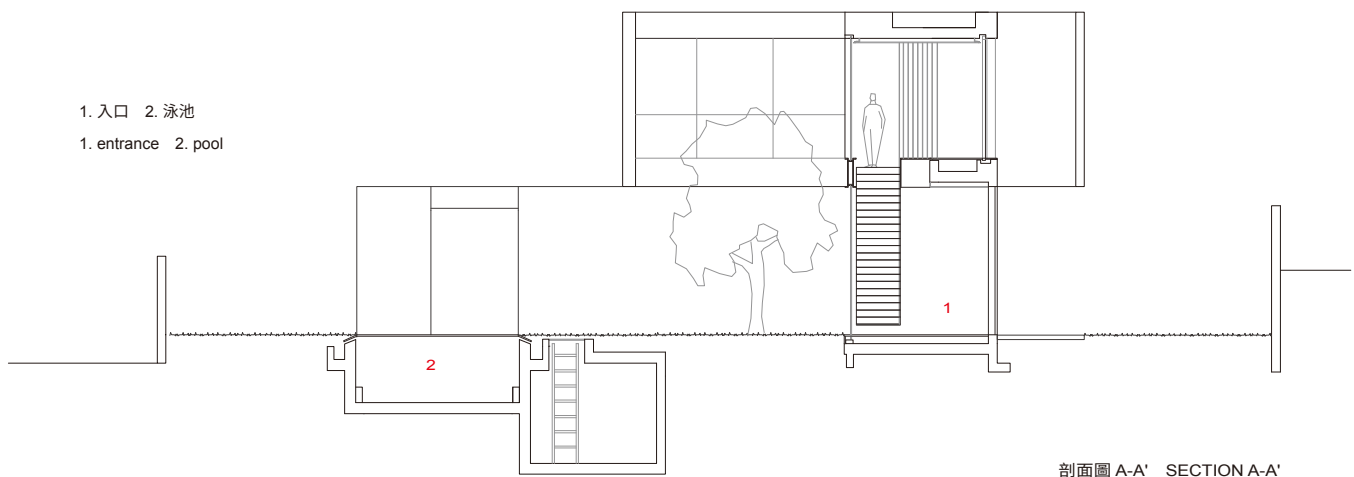
右頁：該案源於創造一個如泡沫般各自獨立，卻又有著緊密連結的一系列空間，以緩解外頭的繁雜干擾

以色列薩維安 K之家 K House, Savyon, Israel

Pisou Kedem Architects

主要建築師：湯姆·茲魯亞
各階面積：地面層230平方公尺，一樓120平方公尺
建築面積：350平方公尺
基地面積：1,200平方公尺
主要建材：石膏、玻璃、鋁、石材覆層、混凝土
主要結構：混凝土
座落位置：以色列薩維安
影像：阿米特·杰龍
文字：皮蘇·凱登
採訪：江洋書

Principal Architects · Tom Zruya
Each Floor Area · Ground Floor 230 m² · First Floor 120 m²
Total Floor Area · 350 m²
Site Area · 1,200 m²
Principal Materials · Plaster · Glass · Aluminum ·
Stone cladding · Concrete floor
Principal Structure · Concrete
Location · Savyon, Israel
Photos · Amit Geron
Text · Pisou Kedem
Interview · Yang-Xuan, Jiang



剖面圖 A-A' SECTION A-A'

1. 入口 2. 泳池
1. entrance 2. pool

建築師為業主一家所設計的這棟房子，有個最重要的訴求——即是創造一處全方位的庇護所。為了滿足這個期望，核心概念源於創造一個如泡沫般各自獨立，卻又有著緊密連結的系列空間，以緩解外頭視覺和聽覺上的繁雜設計與過時潮流，甚至是來自媒體和社交網絡無止境的干擾。

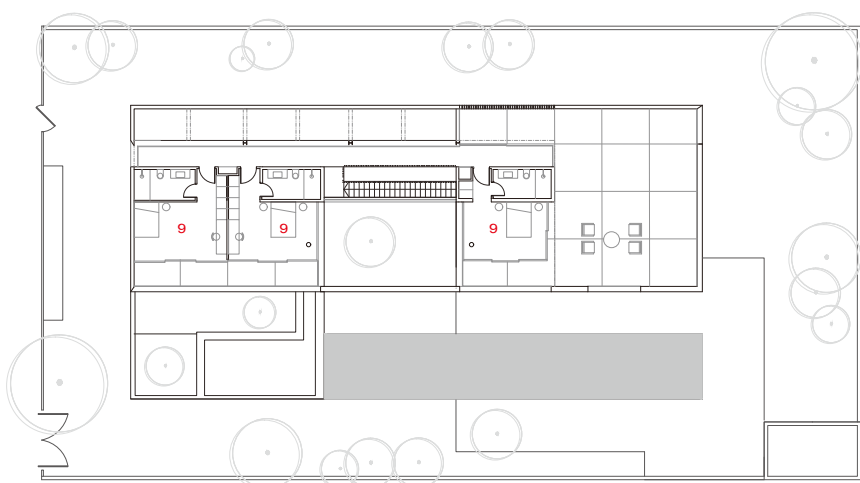
該棟建築沒有刻意彰顯存在感，當人們從街上走近時，它的外牆所隱藏的事物遠勝於它所展示的。然而，當人們走進內部空間時，這個神秘的外牆就彷彿被打開了，在那裡，可以體驗無處不在的視覺寂靜，進而驚喜發現內部空間與周圍環境融為一體。室外波光粼粼的水面和綠色空間，與室內光滑的白色形成鮮明對比，簡潔的建築量體和微妙構圖，以特殊的透氣石灰渲染而成，同時營造氛圍。當光影穿過空間時，其抽象的、幾乎雕塑般的輪廓增加了神秘感，並強調了通過外牆可瞥見的景深。

為了防止當地的氣候災害，並抵擋以色列那炎熱且近乎全年的刺眼陽光，建築師打造了雙層圍牆，把中間陰涼和通風的空間圍塑起來，即使在沙塵暴這樣的極端天氣時，一家人也能在此舒適地度過。此外，在各區域之間建造了一處內部庭院，並選擇能夠承受當地氣候的植栽，而房子內的許多天井，如主臥室和書房之間的天井，同時有助於保持空間的涼爽，並有效降低能源消耗。

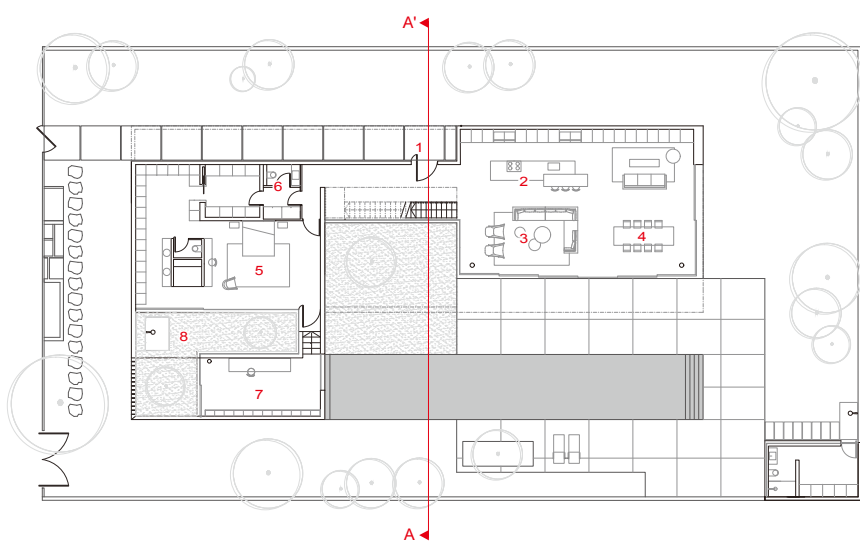
The family for whom we designed this house had one request above all others: that we create an all-enveloping haven for them. In response to their wishes, our starting point for the central design concept was to create a family bubble – a series of spaces providing relief from the external visual and aural chaos of design, passing fads, and the endless intrusion of media and social networks.

The house gives little away. As one approaches it from the street, its façade conceals far more than it reveals. This enigmatic façade opens as one steps into its inner spaces, where one immediately experiences the all-pervasive visual silence. Next comes the surprise of seeing that the interior is at one with its surroundings – for this is an inside outside house whose shimmering waters and green spaces contrast well against its sleek whiteness. The clean-cut architectural volumes and subtle compositions, finished in a special breathable lime-based render, set the mood. The abstract almost sculptural contour adds to the sense of mystery as shadow and light move through the spaces, while also emphasizing the dimension of depth glimpsed through the façades.

To climate proof the house for the sake of the environment and to help the family endure the hot Israeli climate and virtually year-round bright sunlight, we created double envelopes to enclose intermediate shaded and airy spaces. Here the family can comfortably spend time even on days when the most extreme weather blows in from the desert. Between the various spaces, we created internal courtyards for which indigenous trees and plants are able to withstand the climate extremes were chosen. These patios, such as the one between the master suite and the study, are also instrumental in keeping the spaces cool since their presence improves airflow, filters out the harsh sunlight, and significantly reduces energy consumption.

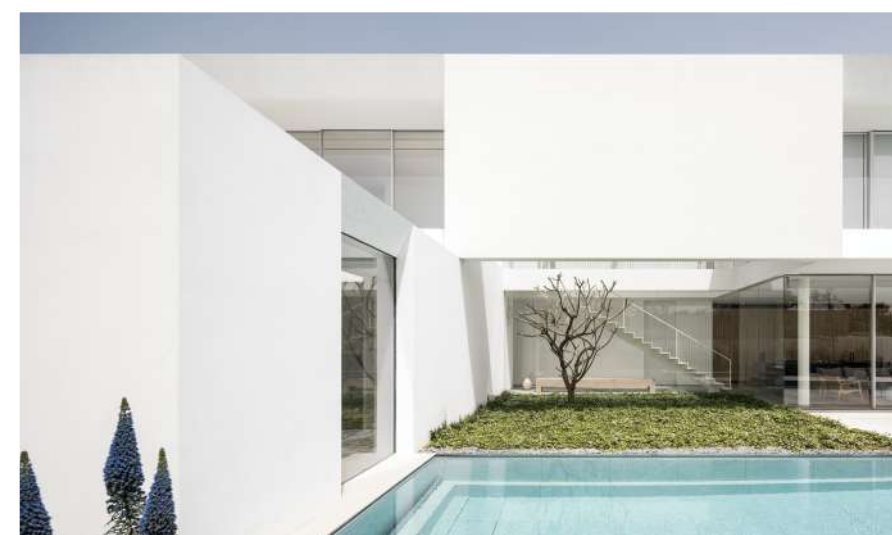


一層平面圖 FIRST FLOOR PLAN



- 1. 入口 1. entrance
- 2. 廚房 2. kitchen
- 3. 客廳 3. living room
- 4. 餐廳 4. dining room
- 5. 主臥室 5. master bedroom
- 6. 盥洗室 6. lavatory
- 7. 書房 7. study
- 8. 中庭 8. courtyard
- 9. 臥室 9. bedroom

地面層平面圖 GROUND FLOOR PLAN



右頁·左頁：室外波光粼粼的水面和綠色空間，與室內光滑的白色形成鮮明對比



右頁·左頁：光影穿過空間時，其抽象的、幾乎雕塑般的輪廓增加了整體神秘感

