

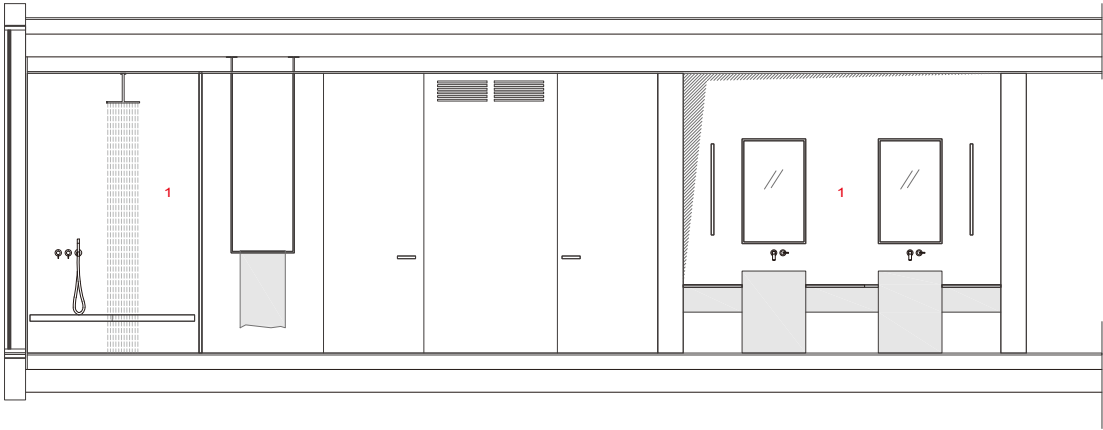


右頁：頂層的位置優勢，賦予
該案開闊通透的景觀視野

以色列特拉維夫 V30
V30, Tel Aviv, Israel
皮蘇·凱登建築師事務所
Pisou Kedem Architects

首席建築師：阿亞拉·格倫瓦爾德
執行設計：埃亞·薩里格
施工單位：阿薩夫·盧波
空間性質：住宅
建築面積：477平方公尺（室內）· 62平方公尺（陽台）
主要材料：石材、黃銅、木地板、奶油白油漆
座落位置：以色列特拉維夫
影像：阿米特·木黎
文字：皮蘇·凱登建築師事務所
採訪：洪雅琪

Lead Architect · Ayala Grunwald
Project management · Eyal Sarig
Contractor · Asaf Lupo
Character of Space · Residence
Building Area · 477 m² (interior) · 62 m² (balcony)
Principal Materials · Stone · Brass · Wooden panels this
spatial granny white paint
Location · Tel Aviv, Israel
Photos · Amit Geron
Text · Pisou Kedem Architects
Interview · Grace Hung



1. 主衛浴

1. master bathroom

剖面圖 A-A' SECTION A-A'

V30是一個住宅規劃項目，開闊的尺度與視野，源於該案占地北特拉維夫一座建築的整層高樓當中。表達簡約設計理念的核心始於客廳，並貫穿整體。該案是一個了解如何善用折門優勢的空間規劃，當所有櫃體折門關閉時，內部空間看起來相當簡約乾淨，順勢隱藏材料和設計的豐富性；然而當敞開所有櫃體門片時，視覺的多層次也體現在材料鋪陳上，包含天然石材、黑黃銅飾面、特殊沖孔玻璃和隱藏式照明，賦予深度且優雅的別緻感受。

人們同樣可從衛浴空間窺看上述細節。設計師選用不同色澤的瑪瑙石搭配每間衛浴，打開門時，會驚訝地發現某個房間是金黃的、珊瑚紅的或翠綠的。天然材料的豐富飾面與極簡主義形成對比，使該項目產生有趣且濃烈的火花。此外，該案所有地坪石材皆經過精心挑選，並以花色對紋的形式鋪陳，讓石面的灰紋連續分布在空間各處。石頭為畫面創造了戲劇性，也藉由與其他白色元素相互襯托，它讓整體氛圍更顯充滿活力。

The V30 project is a residential apartment project occupying an entire high floor in a tower in North Tel Aviv. The central element that expresses the design concept is located in the living room, and continues through the apartment, a carpentry piece that knows how to open & close with accordion doors. Inside the carpentry element, which looks very minimalistic and clean when closed, hides material and design richness that is revealed when the doors are opened, the richness is also reflected in the materiality choice like for example, natural stone, blackened brass finish, glass with a special mesh and hidden lighting that gives depth and an elegant and special look.

Another example of the design idea can be found in the corridors, which hide bathrooms covered in onyx stone, each bathroom has onyx cladding in a different color and when you open the door you suddenly discover a room that is all yellow, or pink or green like in the master bedroom. The natural material contains within it movement and richness that are a contrast to minimalism and they produce the very interesting range that exists in this project. The stone was carefully selected and installed in the form of a BOOK MATCH which provides a continuous distribution of the gray tendons. The stone creates drama as it is very dominant and full of movement compared to the stagnation of the other elements.



右頁・左頁：該案善用
折門優勢賦予視覺層次

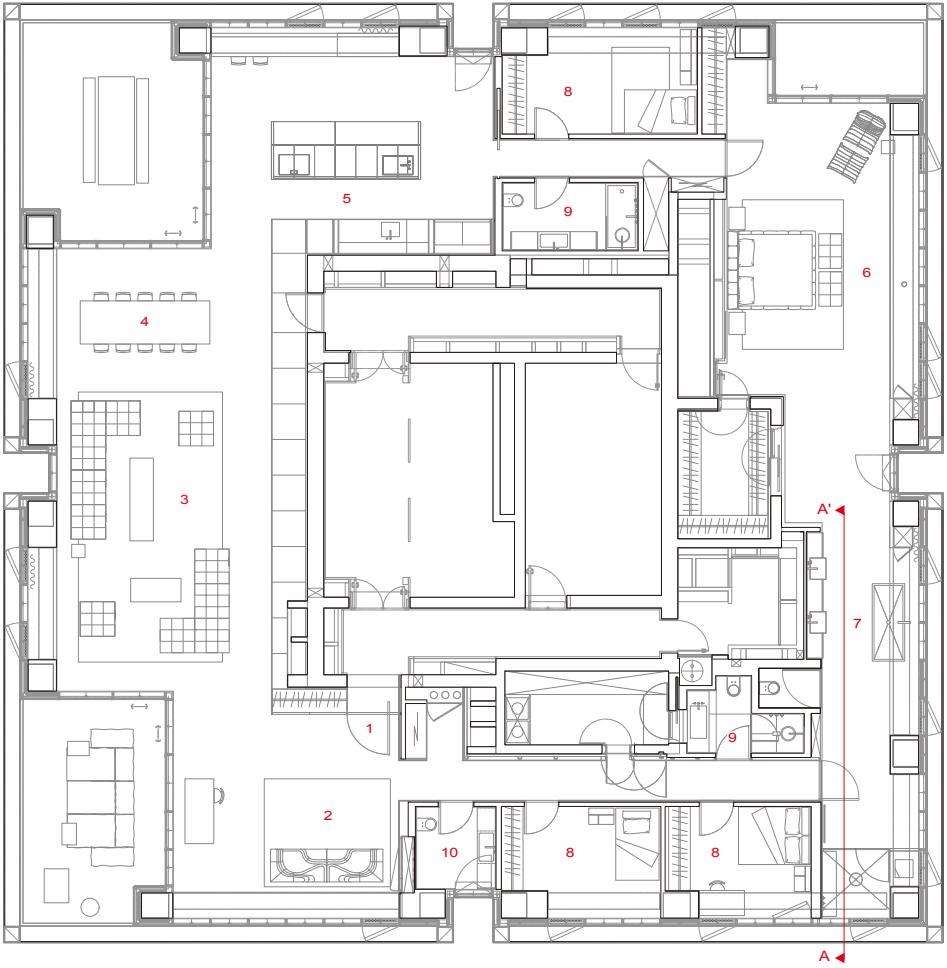


scope



- 1. 入口
 - 2. 入口大廳
 - 3. 客廳
 - 4. 餐廳
 - 5. 廚房
 - 6. 主臥室
 - 7. 主衛浴
 - 8. 臥室
 - 9. 衛浴
 - 10. 盥洗室
- 1. entrance
 - 2. entrance hall
 - 3. living room
 - 4. dining room
 - 5. kitchen
 - 6. master bedroom
 - 7. master bathroom
 - 8. bedroom
 - 9. bathroom
 - 10. lavatory

平面圖 PLAN





右頁・左頁：設計師刻意在不同衛浴空間
搭配多色瑪瑙石，襯托公領域的高雅白色調





右頁・左頁：整體空間規劃秉持簡約
極淨，不參雜一絲多餘裝飾



scope

