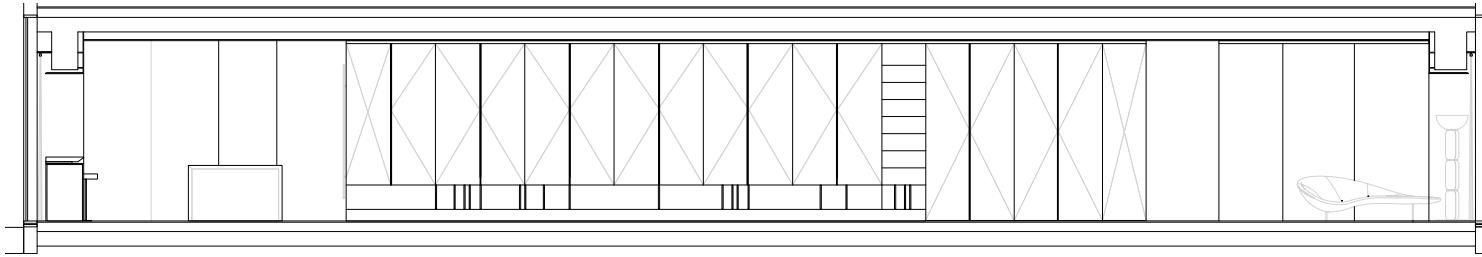


Building Constructions | V30, Tel Aviv, Israel
建築結構 以色列特拉維夫 V30
皮蘇·凱登建築師事務所 | Pitsou Kedem Architects
影像：阿米特·本榮
Photos：Ami Geron

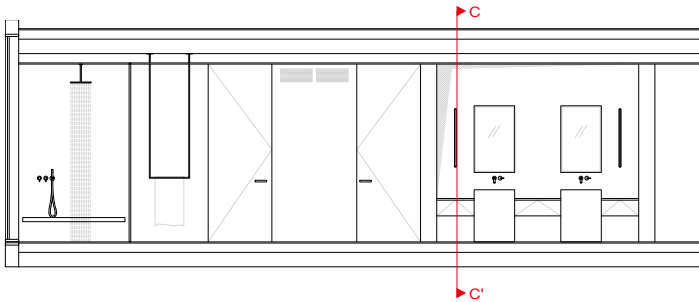
V30是一個住宅規劃項目，開闊的尺度與視野，源於該案占地北特拉維夫一座建築的整層高樓當中。表達簡約設計理念的核心始於客廳，並貫穿整體。該案是一個瞭解如何善用折門優勢的空間規劃，當所有櫃體折門關閉時，內部空間看起來相當簡約乾淨，順勢隱藏材料和設計的豐富性；然而當門打開時，視覺的多層次也體現在材料鋪陳上，包含天然石材、黑黃銅飾面、特殊沖孔玻璃和隱藏式照明，賦予深度且優雅的別緻感受。

人們同樣可從衛浴空間窺看上述設計理念。設計師選用不同色澤的瑪瑙石搭配每間浴室，當你打開門時，會驚訝地發現某個房間是金黃的、珊瑚紅的或翠綠的。天然材料的豐富飾面與極簡主義形成對比，使該項目產生有趣且濃烈的火花。此外，該案所有地坪石材皆經過精心挑選，並以花色對紋的形式鋪陳，讓石面的灰紋連續分布在空間各處。石頭為畫面創造了戲劇性，也藉由與其他白色元素相互襯托，它讓整體氛圍更顯充滿活力。

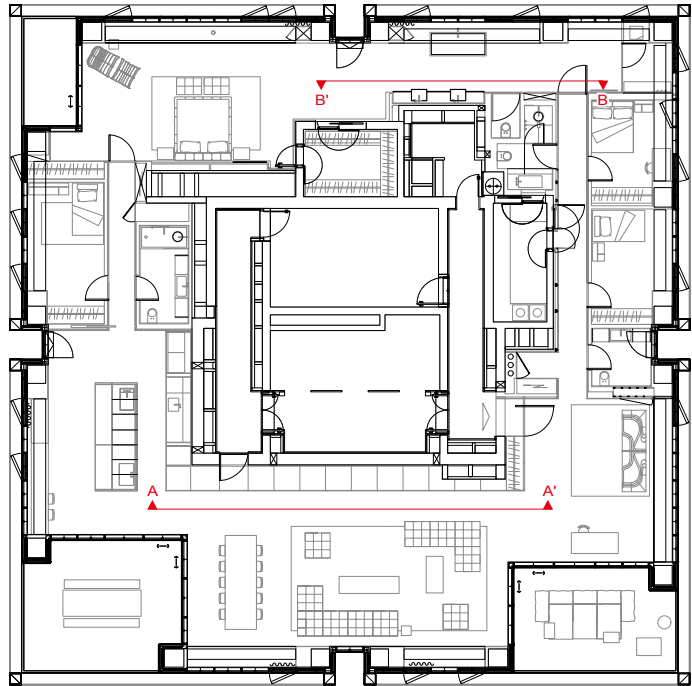
The V30 project is a residential apartment project occupying an entire high floor in a tower in North Tel Aviv. The central element that expresses the design concept is located in the living room, and continues through the apartment, a carpentry piece that knows how to open & close with accordion doors. Inside the carpentry element, which looks very minimalist and clean when closed, hides material and design richness that is revealed when the doors are opened, the richness is also reflected in the materiality choice like for example: natural stone, blackened brass finish, glass with a special mesh and hidden lighting that gives depth and an elegant and special look. Another example of the design idea can be found in the corridors, which hide bathrooms covered in onyx stone, each bathroom has onyx cladding in a different color and when you open the door you suddenly discover a room that is all yellow, or pink or green like in the master bedroom. The natural material contains within it movement and richness that are a contrast to minimalism and they produce the very interesting range that exists in this project. The stone was carefully selected and installed in the form of a BOOK MATCH which provides a continuous distribution of the gray tendons. The stone creates drama as it is very dominant and full of movement compared to the stagnation of the other elements.



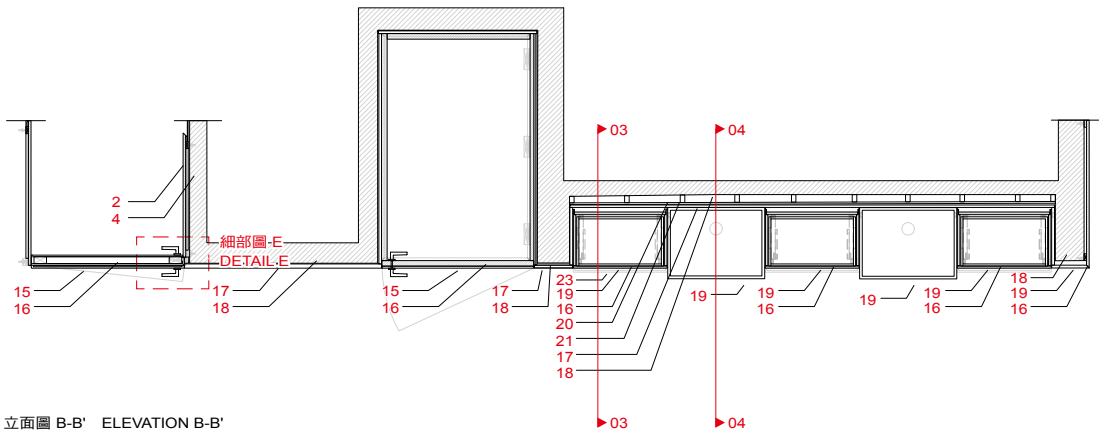
剖面圖 A-A' SECTION A-A'



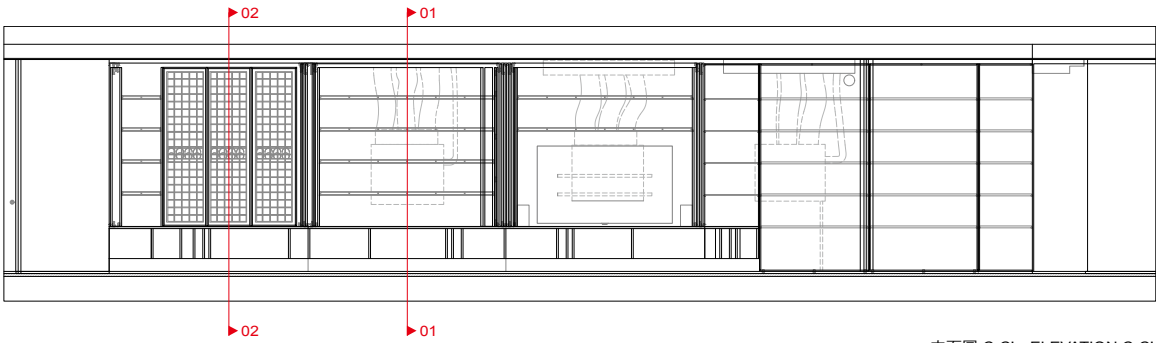
剖面圖 B-B' SECTION B-B'



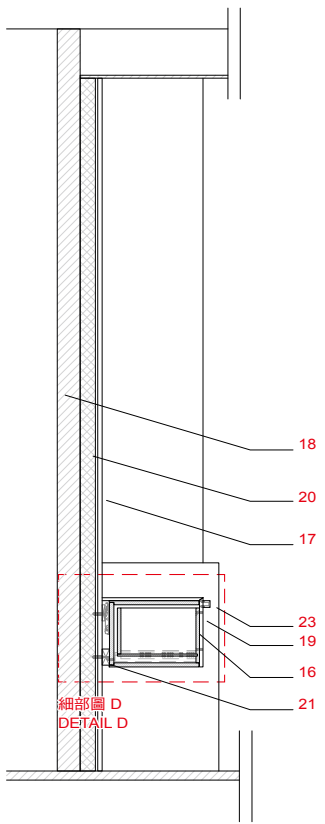
平面圖 PLAN



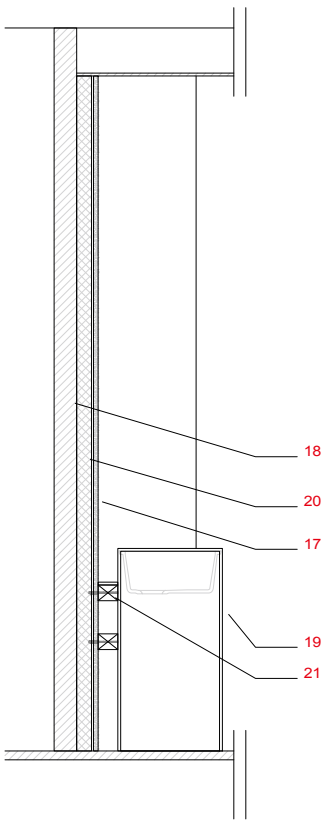
立面圖 B-B' ELEVATION B-B'



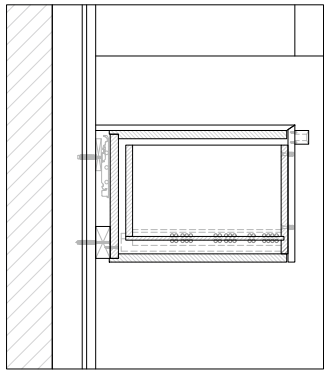
立面圖 C-C' ELEVATION C-C'



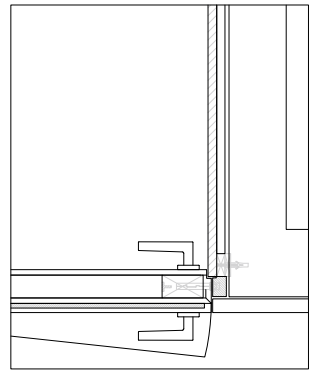
剖面圖 03 SECTION 03



剖面圖 04 SECTION 04



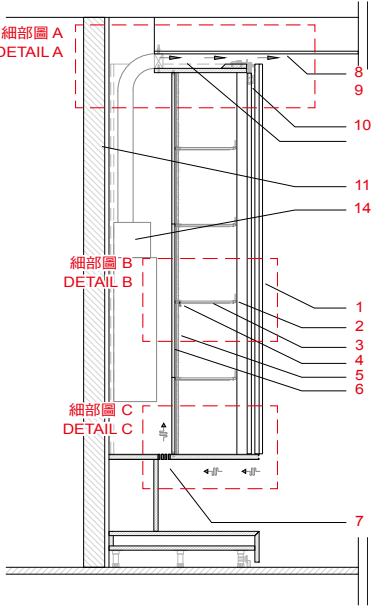
細部圖 D DETAIL D



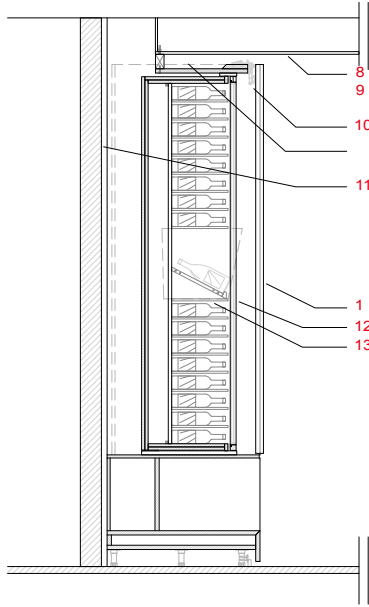
細部圖 E DETAIL E

- 1. wood panel with a grainy finish
- 2. metal with a blackened brass finish
- 3. glass shelf with brass mesh
- 4. hidden LED lighting
- 5. polished natural stone
- 6. wood panel
- 7. grooves in carpentry for ac injection
- 8. plaster ceiling
- 9. air injection
- 10. accordion opening mechanism for furniture door
- 11. concrete wall
- 12. double glass with a metal frame
- 13. painted wood in a blackened brass color
- 14. AC
- 15. a polished thin stone that is cladding the door
- 16. wood
- 17. natural stone wall cladding
- 18. concrete wall
- 19. corian
- 20. plaster wall
- 21. RHS 60/60
- 22. perforated sheet metal
- 23. metal handle with blackened brass finish

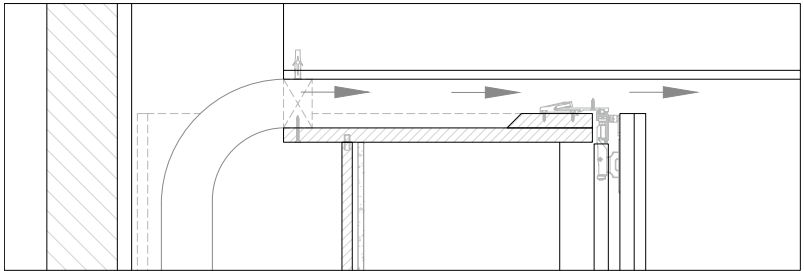
- 1. 木紋飾面木板
- 2. 黑色黃銅飾面金屬
- 3. 黃銅網的玻璃架
- 4. 隱藏式LED照明
- 5. 天然石材拋光
- 6. 木面板
- 7. 木工凹槽用於交流注入
- 8. 石膏天花板
- 9. 空氣導入口
- 10. 風琴式結構家具門
- 11. 混凝土牆
- 12. 金屬框架的雙層玻璃
- 13. 黑黃銅色塗層木頭
- 14. 交流電
- 15. 包覆大門的拋光薄石材
- 16. 木頭
- 17. 天然石材牆面覆蓋層
- 18. 混凝土牆
- 19. 可麗耐石英石
- 20. 石膏牆
- 21. 矩形空心剖面柱 60／60
- 22. 穿孔金屬板
- 23. 黑黃銅飾面金屬手柄



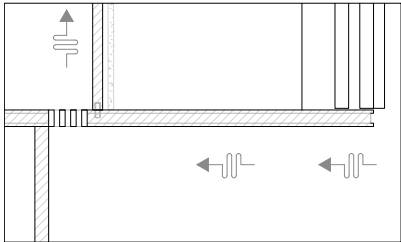
剖面圖 02 SECTION 02



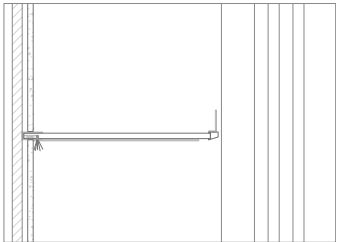
剖面圖 01 SECTION 01



細部圖 A DETAIL A



細部圖 C DETAIL C



細部圖 B DETAIL B