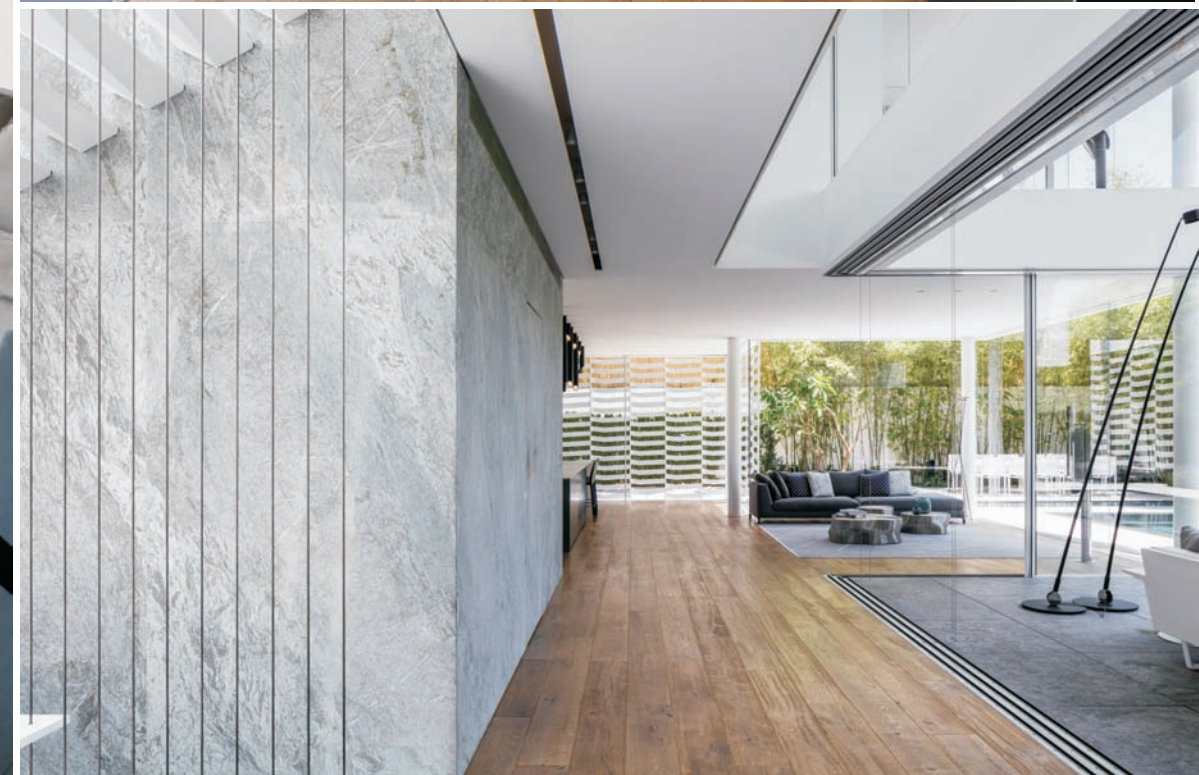


J HOUSE

光影斑驳

设计 / Pitsou Kedem、Nurit Ben Yosef 灯光 / Orly Avron Alkabetz 摄影 / Amit Geron
修图 / Eti Buskila 编译 / 范嘉苑 美编 / 张萍萍

项目地址 以色列
项目面积 800m²
设计单位 Pitsou Kedem Architects



Pitsou Kedem
以色列Pitsou Kedem Architects
创始人兼主设计师

关于这座房子的故事起源于它周围的环境。从街道望向房子入口，一条笔直的石头小径，一条人行道以及沥青路面勾勒出了外围的轮廓。往街道方向延伸的斜坡与微微上扬的屋顶形成对比，营造出一份独有的张力。洁白的立面、长条形的窗户以及轻盈的结构相互组合，让房子看起来格外引人注目。

上扬的屋顶与下沉的地面结构形成反差，也预示了房子内部的整体设计风格。光线透过斜屋顶下的白色钢铁条形框架投射入室内，光与影交织在一起形成优美的视觉效果。白色的钢制楼梯耸立于空间之中，与房子的整体环境融于一体。波光粼粼的水纹、玻璃线条、金属条带以及斑驳的光影都成为了室内氛围的营造者，为空间勾勒出一幅轻盈灵动的画面。光线随着时间的推移也在不断地变化着角度，同时也带动了反射及光影的变动。这种不断变幻的光影效果放大了用户对于空间的观感，居于其中的人们无论是在移动或静观时都会沉浸于美妙的空间氛围之中。

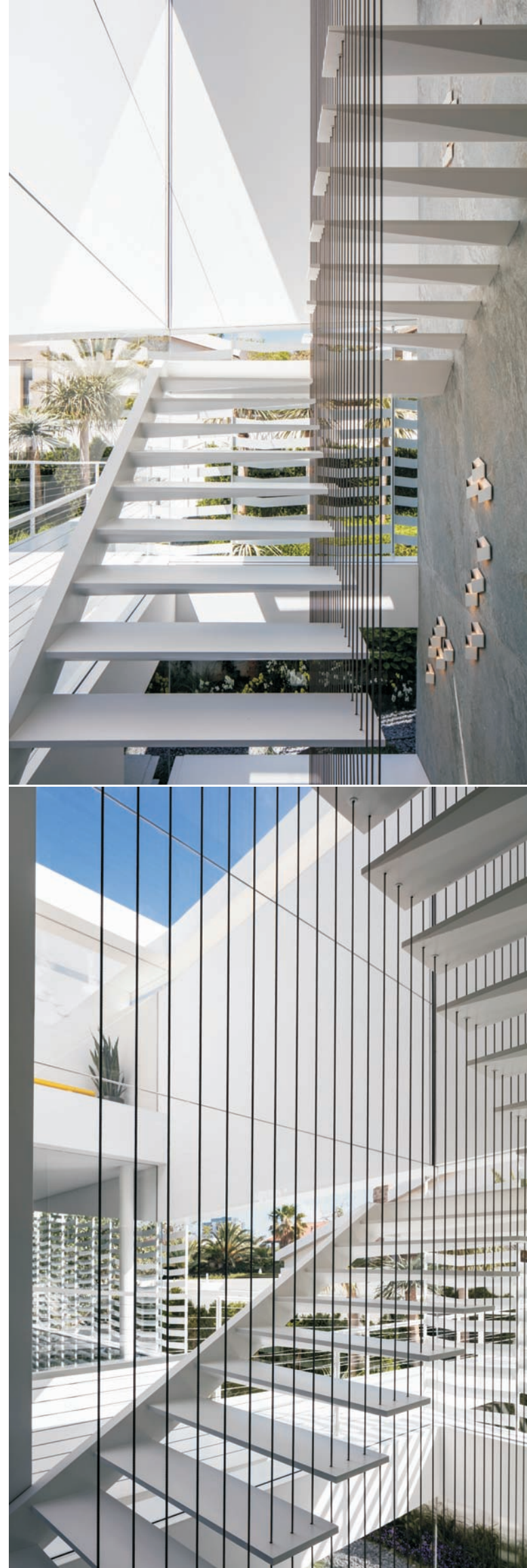
住宅的空间布局不仅极富戏剧般的张力，同时也洋溢着愉悦之感。与此同时，不受传统格局约束的自由感也体现在空间布局的复杂性，两层睡眠空间之间间隔了一层公共空间——较高层是客卧区域，而更为隐秘的底层则是主卧区域的所在位置。下沉的花园里是一片葱郁的绿植景象，在阳光的沐浴下也形成了光影交错的变幻效果，庭院里还有一方泳池与几处户外休闲区，流露出写意的生活气息。

从空间布局到光影效果等方面的考量都被融入于设计之中，打破了水平面的限制并提升了整体建筑的动感——低处的就座区域、英式花园、反射倒影的水池以及入口桥体等元素整合在一起，极大地丰富了住宅的层次感。大量落地玻璃的运用将室内外空间完美地融合在一起，也将大自然带进住户的日常生活之中。公共区域的家具以简约风格为主，玻璃家具的运用让空间质感更加轻盈通透，而隐私区域则采用了暗色调的风格，并用些许明艳的色彩来点缀，让空间呈现出低调而时尚的调性。房子里的每一处细节都经过了深思熟虑，旨在让用户漫步于住宅之中获得最佳的空间体验。

当阳光洒在这幢白色的建筑上，每一个时刻所呈现出的模样都是独一无二的景象。光、影、建筑共同编排出一场属于空间的舞蹈，参访者身临其中能看到其精彩的演绎，即使在无人时的静谧时刻，它也美丽依旧。







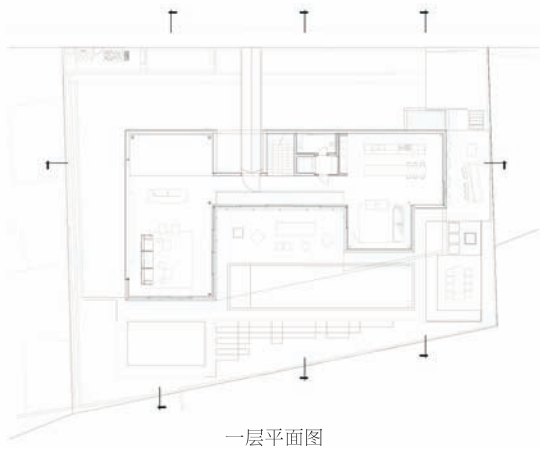
The story of the J House originates from its surroundings. The view from the street to the entrance reveals a resolute stone path, a sidewalk, asphalt and an outdoor wall, all forming one complete composition. After a moment, tension is created by the realization of the slope downward from the street and the ambitious reach of the roof upwards – a roof noted by its whiteness, long window and sense of levity.

The contrasting lines of the ascending roof and descending land foreshadow the inner scheme of the home. For example the iron white lattice whose hollow spaces serve the light pouring in from diagonal roof – shadowy shapes appear to swim amidst reflections of light. An iron white staircase lends itself to the general atmosphere of the home. Ripples of water, the lines of glass, cable rails, and patches of light, all become actors in a domestic tableau. The pace of their movements is dictated by the sun – every degree of movement changes the light and the sequence of reflections and shape – the existing choreography of the home amplifies a visitor's sense of being as either an additional source of movement or the beholder thereof.

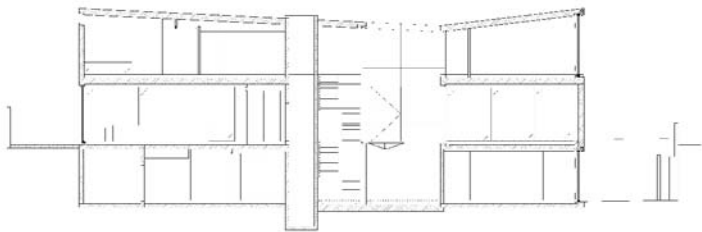
The choreography of the home is not just a dramatic tableau – it is full of humor as well. The freedom of design is intimately connected to its complexity across levels – two floors of private bedrooms intersected by common split-levels – the higher one is the busiest hub for visitors. It showcases the fallen garden whose greenery embellishes the intricate shadows and provides vantage to the pool, surrounding walls and outdoor lounge.

These aspects, integrated into the design, play across levels and enhance the dimension of movement of the entire architecture – the lowered seating area, the English yard, reflecting pools and the entrance bridge. These are borne of the same logic – to enforce the visitor's experience of presence in the space.

Every moment is a new one-time occurrence, where sunlight falls on the building components providing a never before seen unique performance. Dance envelops in the visitor's presence as it does even without them. **M**



一层平面图



剖面图

